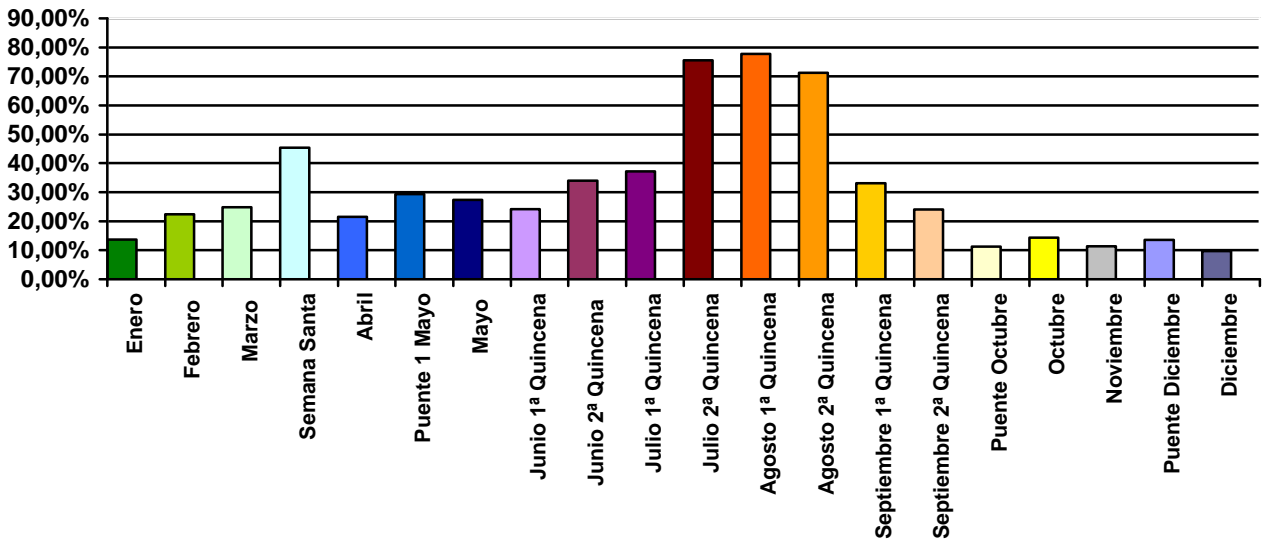
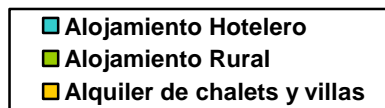
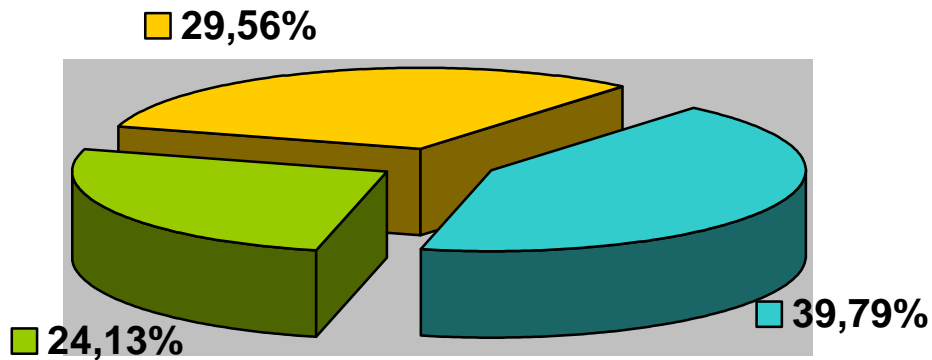




Ocupación Turística año 2008

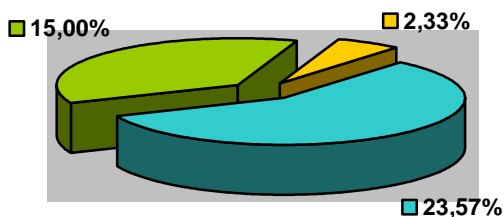


Año 2008:

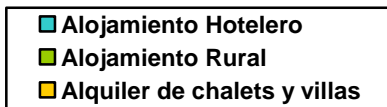
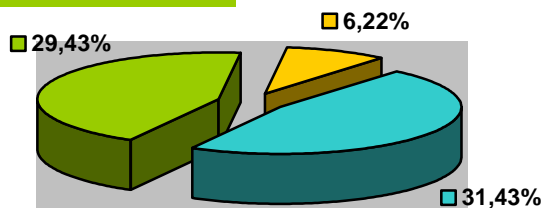




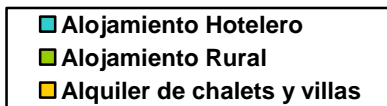
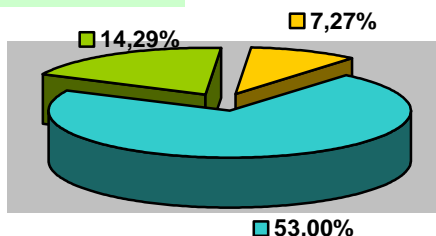
Enero 2008: 13,63 %



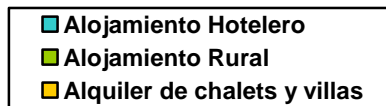
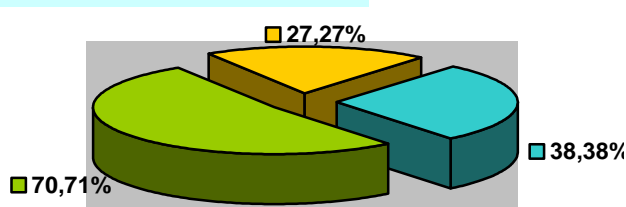
Febrero 2008: 22,36 %



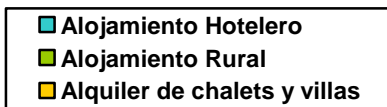
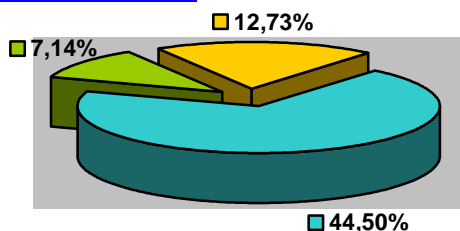
Marzo 2008: 24,85 %



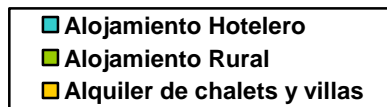
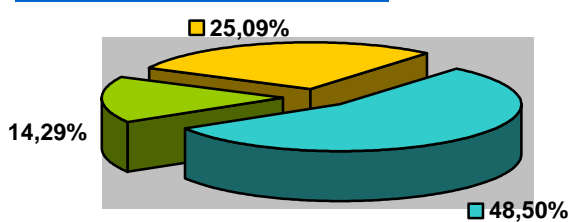
Semana Santa 2008: 45,45 %



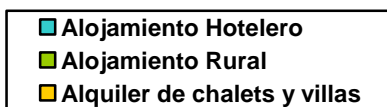
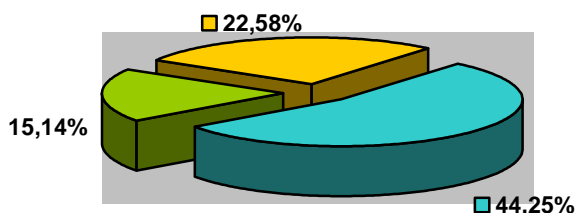
Abril 2008: 21,46 %



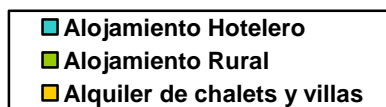
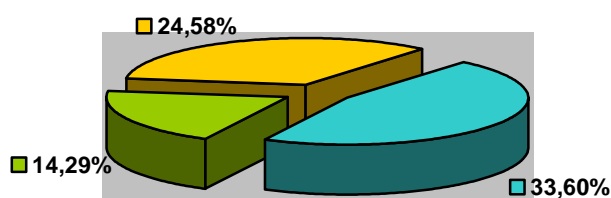
Puente 1 Mayo 2008: 29,29 %



Mayo 2008: 27,33 %

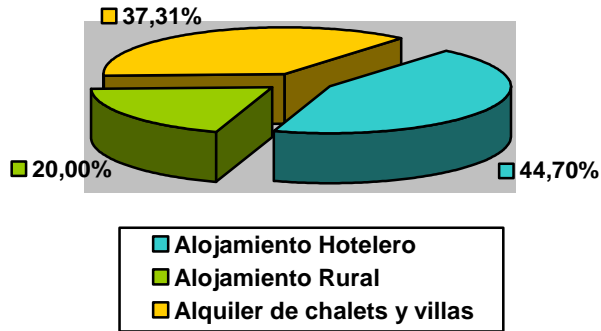


Junio 1ª Quincena 2008: 24,16 %

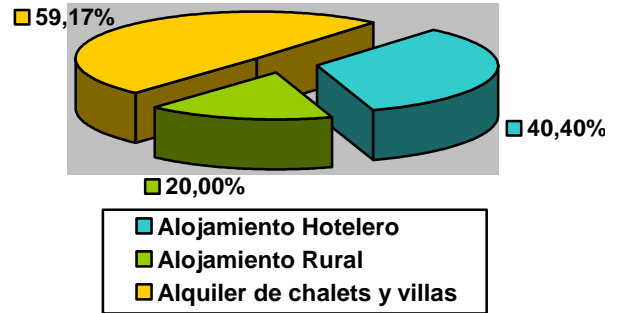




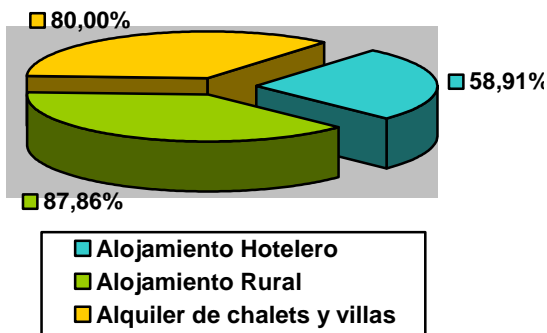
Junio 2ª Quincena 2008: 34,00 %



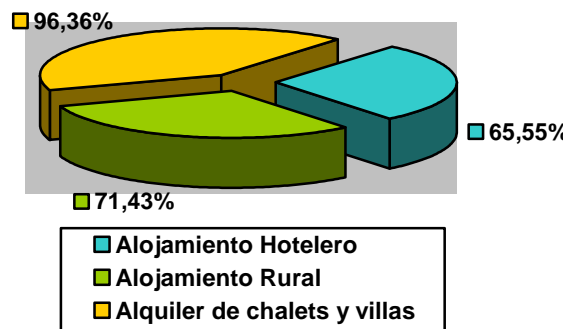
Julio 1ª Quincena 2008: 39,86 %



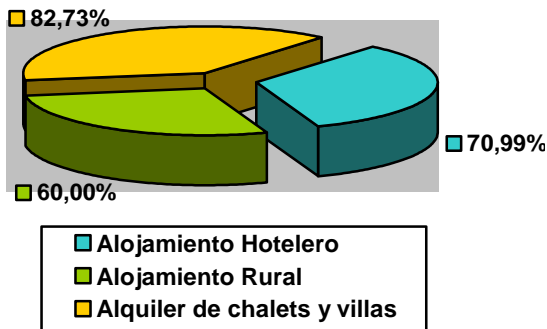
Julio 2ª Quincena 2008: 75,59 %



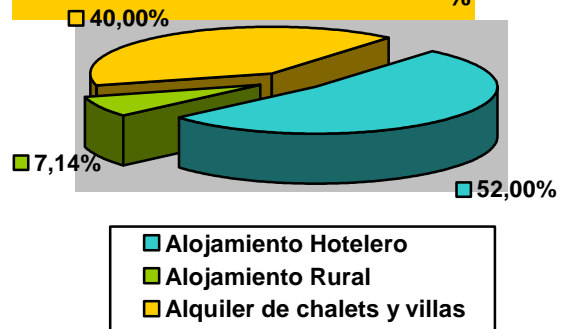
Agosto 1ª Quincena 2008: 77,78 %



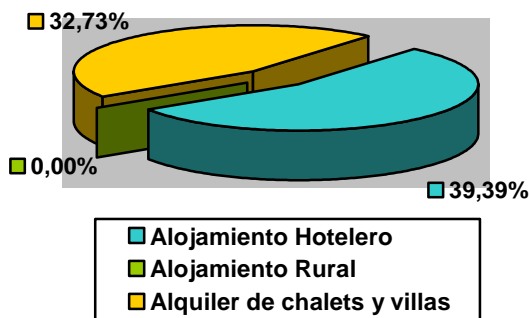
Agosto 2ª Quincena 2008: 71,24 %



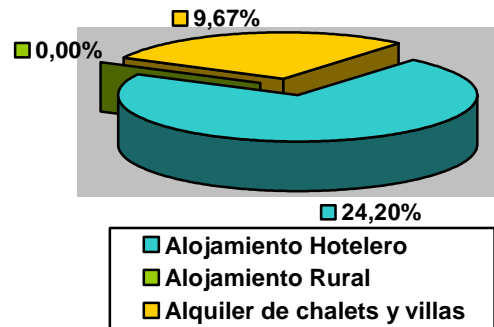
Septiembre 1ª Quincena 2008: 33,07 %



Septiembre 1ª Quincena 2008: 24,04 %

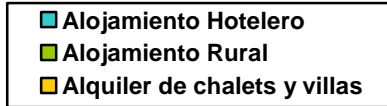
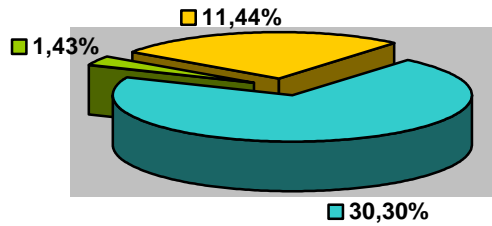


Puente Octubre 2008: 11,29 %

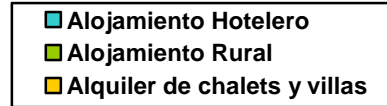
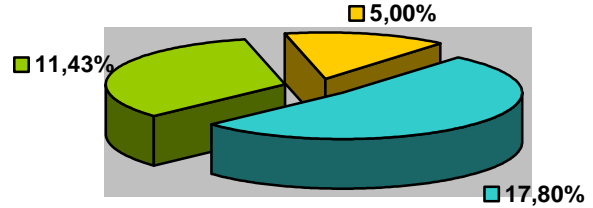




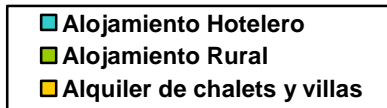
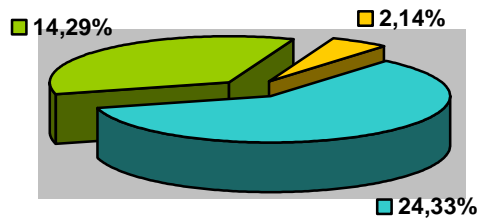
Octubre 2008: 14,39 %



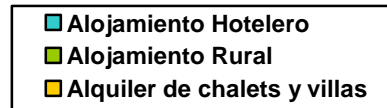
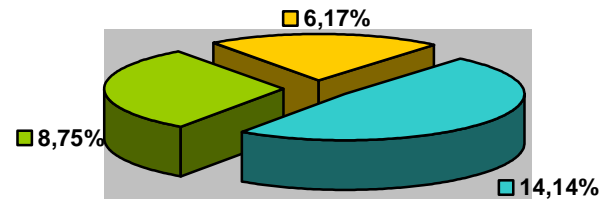
Noviembre 2008: 11,41 %



Puente Diciembre 2008: 13,59 %



Diciembre 2008: 9,69 %



Nota: Estos datos se obtienen a partir de las aportaciones mensuales de las empresas de alojamiento turístico. Durante el periodo estival (julio-septiembre) la información es quincenal y en los periodos de Semana Santa y determinados puentes se recopilan datos de ocupación específicos.

Fuente: Elaboración propia a partir de la explotación de estadísticas